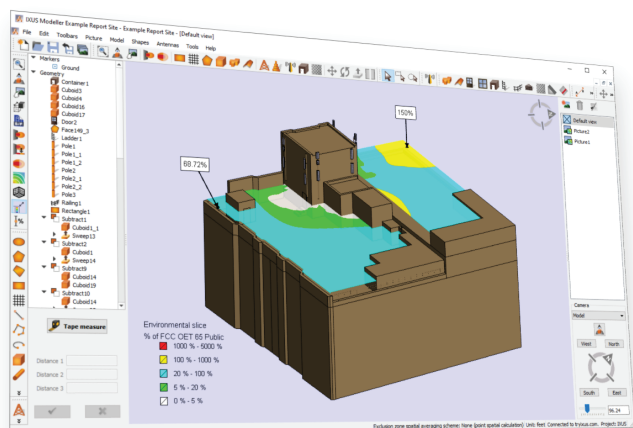


Multiple applications coherently work together to ensure your **entire network** is **RF compliant** and **stays that way**. An **easy workflow** and **simulation-driven approach** enables your teams to **accurately analyze** base stations, **minimize risk** and **save money**.



"Learning the tools are intuitive and easy - my team could get started on production problem solving in a matter of minutes." - **IXUS partner**

Enjoy Unparalleled accuracy

When it comes to **planning 5G**, accuracy matters. Comparative studies has shown time and time again, **there is no competition** when it comes to simulation accuracy with our Field Assessment Calculator (FAC™). The best computation speed, with recognized robustness and reliability to cope with a multitude of sources at the same time. IXUS is the right solution for ensuring compliance without jeopardizing QoS.



Reduce CAPEX by minimizing risks involved with RF Compliance



Industry leading 5G modelling for absolute peace of mind.



Automatically generate RF safety **reports**, proposals and other documentation to **close deals faster**.

Peace of mind

Our engineers provide you with the most up to date and accurate representation of antenna models possible. Each antenna model undergoes a rigorous validation process before it's published for use.

The **IXUS Portal** has **more than 4000 antenna models** available for download. With new models added every week.



Get approval from landlords and municipalities with **clear compliance reports**.



Manage large projects with **enterprise-grade tools**.



Seamlessly integrate with your production databases.



No other RF safety solution provider offers such a **comprehensive set of applications, tools and services**. You can rest assured that your investment in IXUS will be protected by an award-winning product team as well as a global community of passionate users. **With IXUS, you and your team can be RF Safety Experts.**

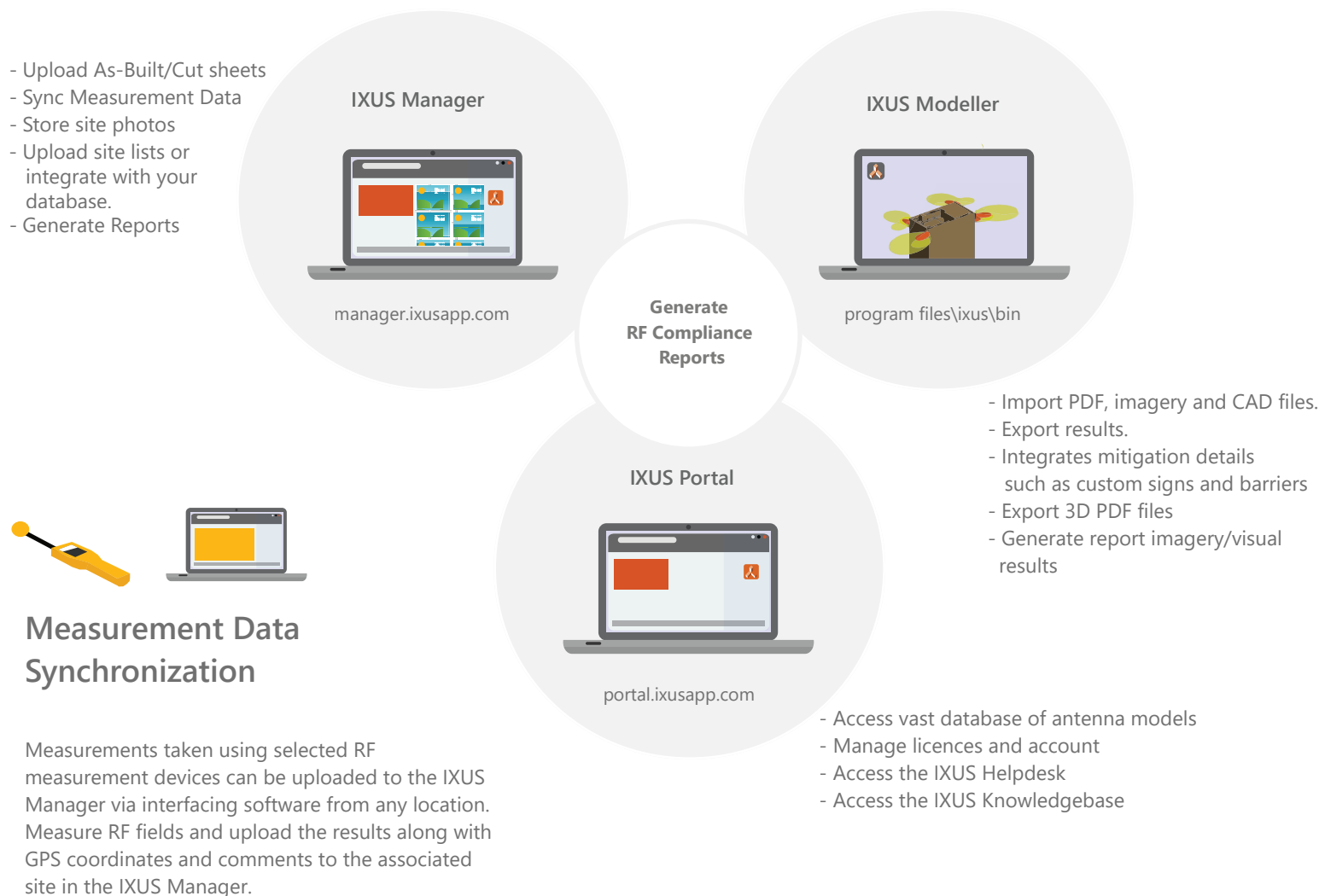
Core Applications

This software suite consists of an EM propagation modelling tool that seamlessly integrates with a database application called the **IXUS Manager**. The **IXUS Manager** is a web application designed to manage a database of stored compliance information, files and base station models.

IXUS Modeller is a Windows desktop application used to model base stations quickly and easily. You can use the dimensions measured during site visits to help you build an accurate model of buildings, rooftops, access routes, ladders, lattice masts and many other architectural features.

Users can download and place antenna models from the **IXUS Portal** and become instant RF compliance experts.

At its core, the IXUS Application Suite is designed to generate professional RF Compliance Reports.



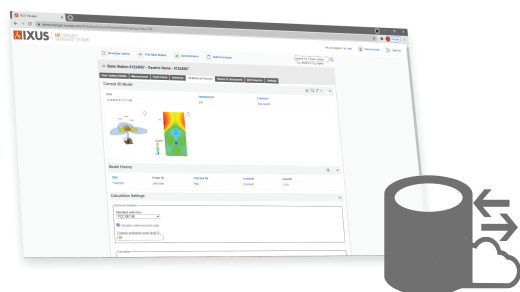
Measurement Data Synchronization

Measurements taken using selected RF measurement devices can be uploaded to the IXUS Manager via interfacing software from any location. Measure RF fields and upload the results along with GPS coordinates and comments to the associated site in the IXUS Manager.

Globally accepted methodologies

IXUS is a member and active contributor for IEC Technical committee 106 on various work groups. Every aspect of the **calculation methodology** has carefully been designed and implemented **in accordance with** the **IEC 62232** as well as **IEEE C95.3**, **ITU-T K.61**, **CENELEC 50383**.





Easy integration with your RAN, Property and Project databases

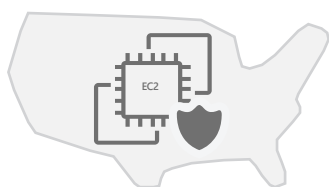
Integration with proprietary base station databases, or existing network and systems infrastructure is something we take pride in. This ensures that you always have up-to-date base station information. Although full integration takes some time and effort, our value-added solutions are available for all our clients. Get started in seconds with our CSV importing functionality or make use of our integration platform and tools for real-time efficiency.

Easily understood environmental reports

When a model is shown in top view, all values shown for the IXUS environmental orthoslices are accessible areas. This makes it very easy for the non-technical reader to understand what they are looking at and where the values are exceeding the various limits.

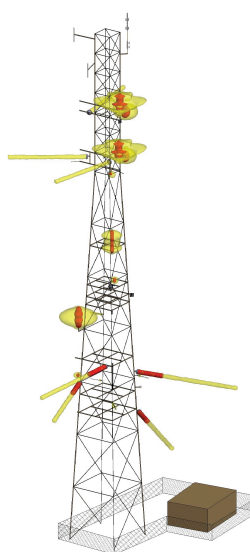
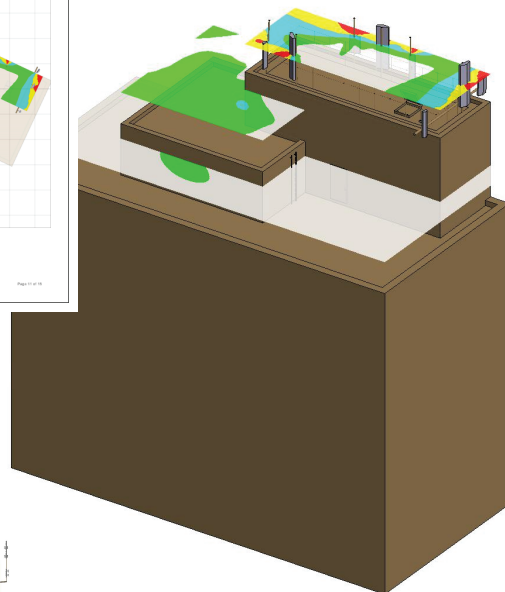
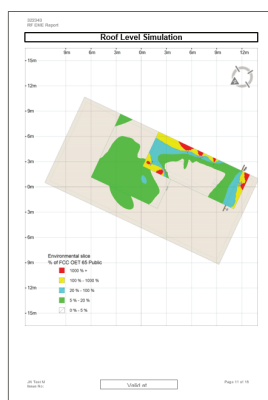
Calculation options

Easily determine maximum RF exposure at specific points of interest with environmental orthoslices or field points, including options for spatial averaging calculations. Calculations can also be easily configured for specific safety standards applicable to your region or regulator (ICNIRP, FCC, Safety code 6, etc.).



Secure Cloud Solutions in Australasia & SE Asia


IXUS is partnered with AWS (Amazon Web Services) and makes use of Amazon's Elastic Compute Cloud (EC2) for hosting our database, backend services and files. Daily backups to Amazon S3 ensures complete peace of mind for the safety of your data.



"Very user friendly... Very useful for site compliance and even for site design and acquisition as real site views help to convince the stake-holders for a site build project." - **IXUS user in Africa**

Contact us today for a **demo** and a **free trial**:

 info@ixusapp.com

 <https://ixusapp.com/contact/>